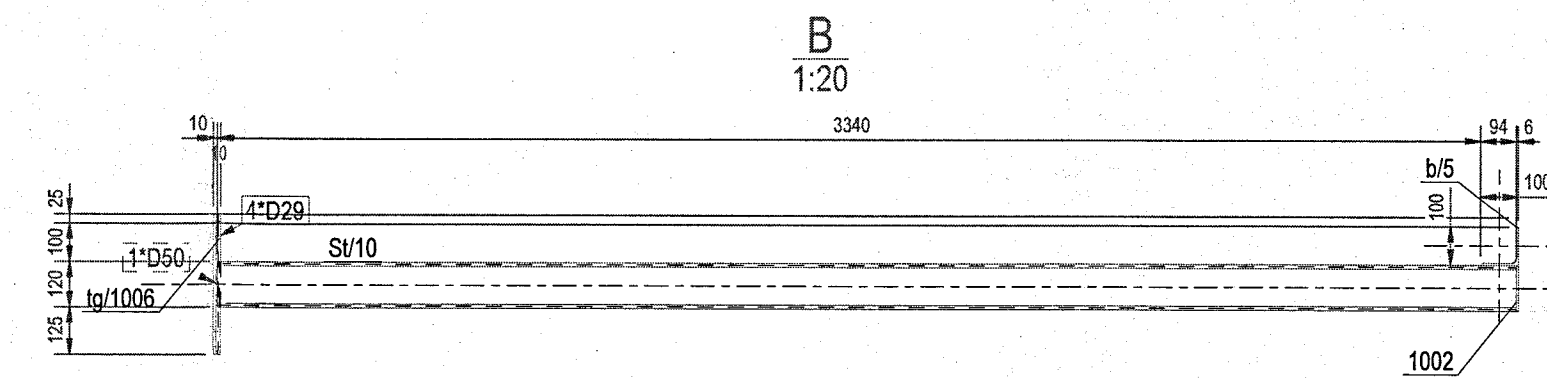
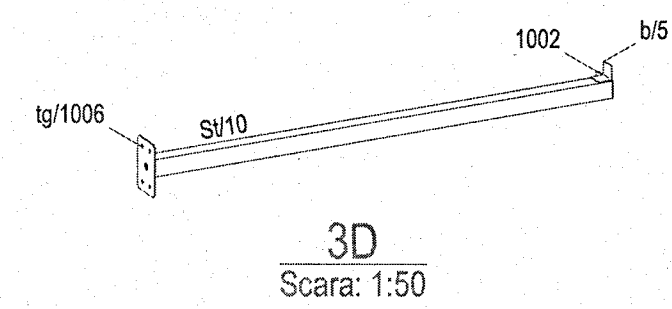
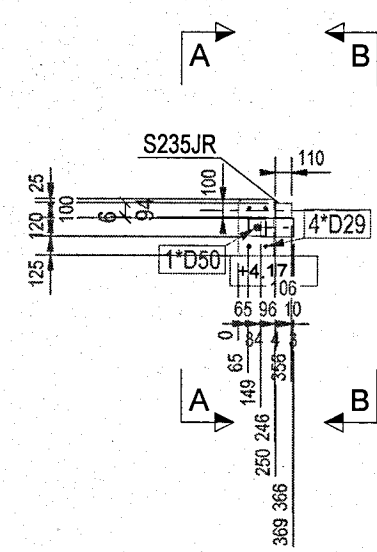
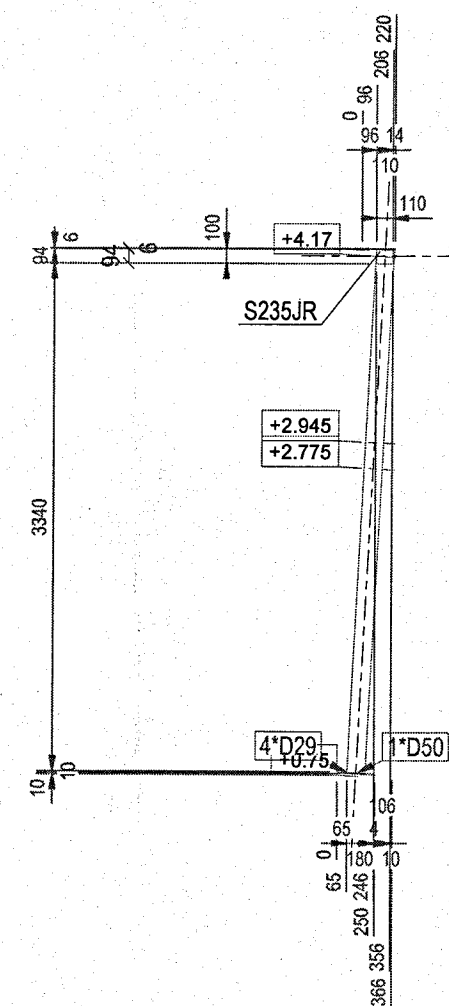


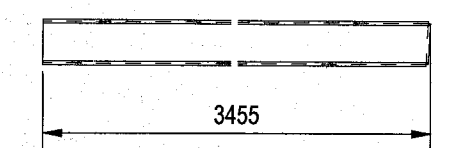
Vedere din fata
 1:50



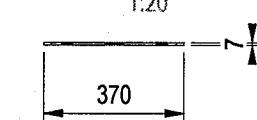
Vedere de sus
 1:50



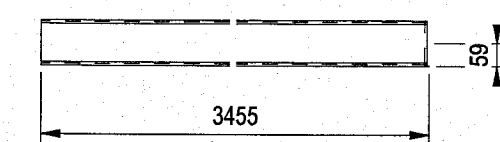
Vedere de jos
 1:20



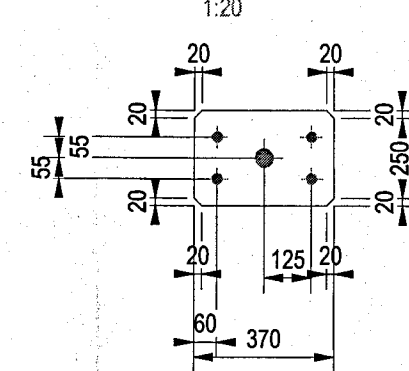
Vedere de jos
 1:20



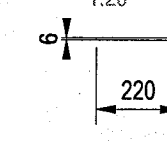
Vedere din fata
 1:20



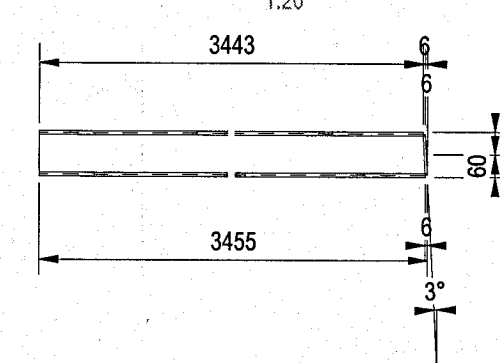
Vedere din fata
 1:20



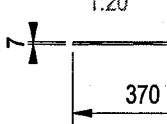
Vedere de jos
 1:20



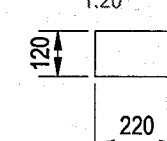
Vedere de sus
 1:20



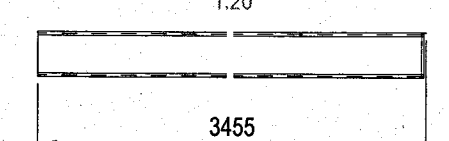
Vedere de sus
 1:20



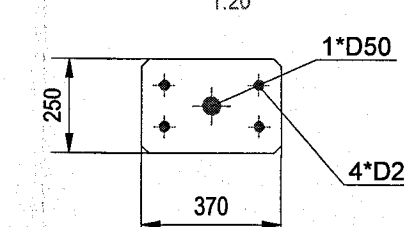
Vedere din fata
 1:20



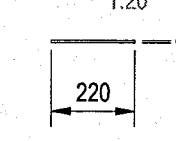
Vedere din spate
 1:20



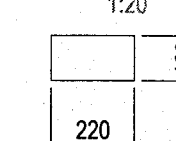
Vedere din spate
 1:20



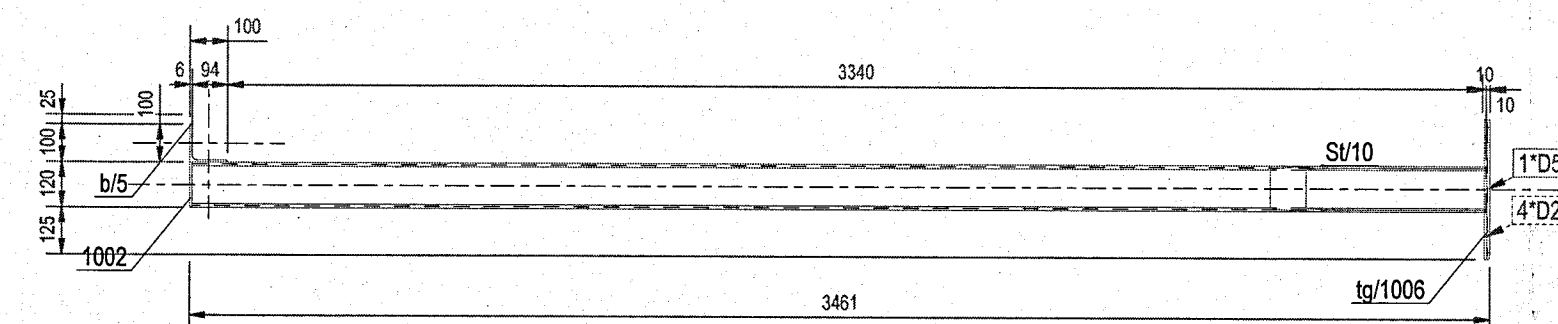
Vedere de sus
 1:20



Vedere din spate
 1:20



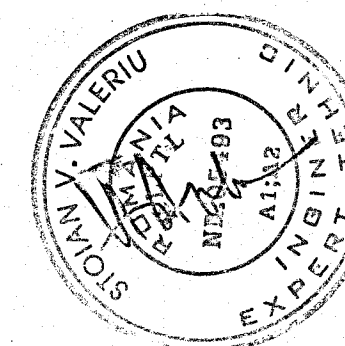
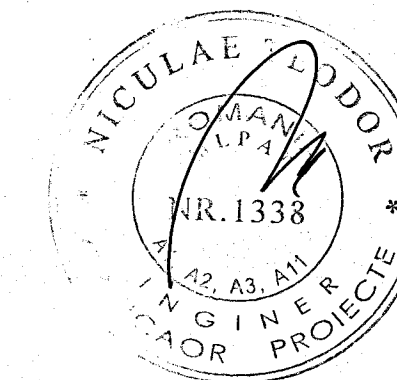
A
 1:20



3D
 Scara: 1:20

3D
 Scara: 1:20

3D
 Scara: 1:20



NOTE GENERALE: Suduri in relief cu grosimea de cordon de 0.7" daca nu se specifica altfel.
 Nivel B de acceptare a sudurilor. Sudura pe toata suprafata de contact.

EXTRAS DE LAMINATE PT. ANSAMBLUL:						BUC. NECESARE	
Pozitie	Profil	Material	No.	Lungime	Arie	Greutate	
b/5	L100*6	S235JR	1	110	0.0	1.0	
1002	PL6*120	S235JR	1	220	0.1	1.2	
SU/10	CFRHS120X120X5	S235JR	1	3455	1.6	60.6	
tg/1006	PL7*250	S235JR	1	370	0.2	5.0	
				Total	1.9	67.9	

NEO STRUCTURAL ENGINEERING
 CONSULTANTA, PROIECTARE, EXPERTISE
 STRUCTURALE SI INDUSTRIALE

Beneficiar: **MINISTERUL AFACERILOR INTERNE**
 Adresa: Județul Constanța, mun. Mangalia, satul Sănuț, strada nr. 230, NC1
 Șef proiect: Ing. Burciu Stefan
 Proiectat: Ing. Burciu Stefan
 Desenat: Ing. Ardelean Adrian
 Denumire planșă: Ansamblul Tunel restaurat
 [St.14]

Rev.: 0 Data: [St.14]