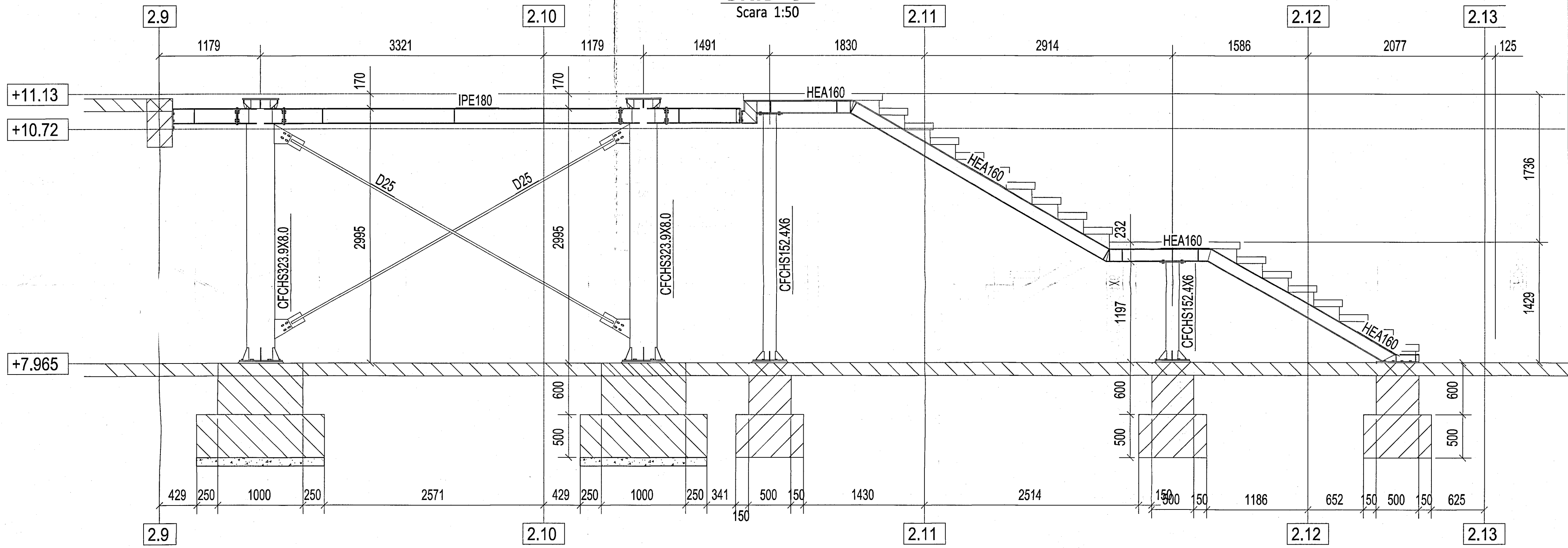


Treptele si podestele aferente scarilor se vor arma cu o plasa Ø10/100/100mm sudata perimetral de profilele tip comier ale ramelor.

### GRID C''

Scara 1:50

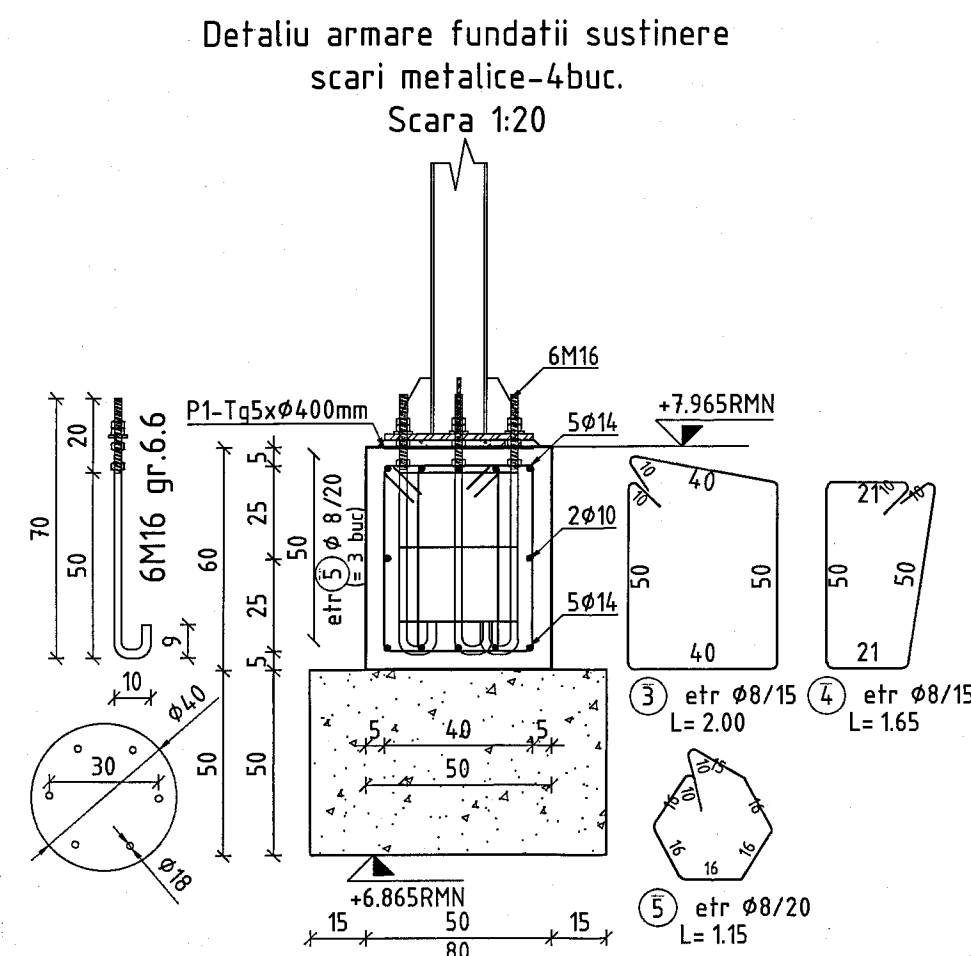


### MOMENTE STRANGERE SURUBURI GR. 8.8

GRUPA B.8		
DIAMETRU	Mr [daNm]	Mr [daNm] (50%)
M12	11	5
M16	26	13
M18	37	18
M20	51	25
M22	67	34
M24	88	44
M27	125	62
M30	171	86

Extras armare fundatii stalpi circulari-2buc. si porniri scari-2buc.

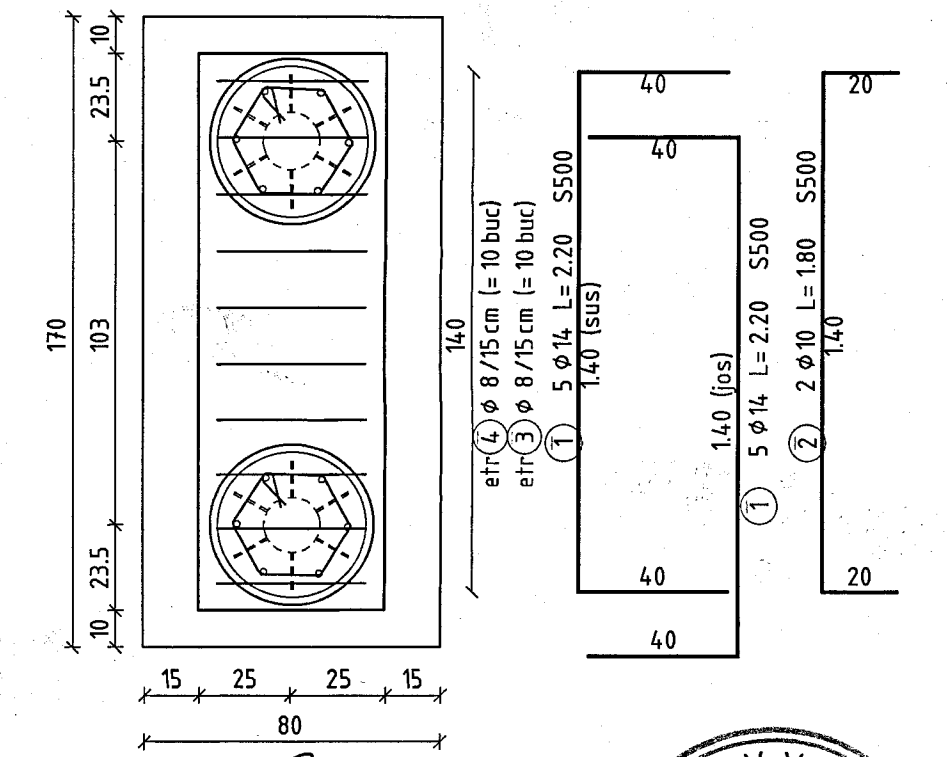
Marca	Ø	Nr. buc.	L (m)	8	10	14
1	16	40	2.20	-	-	88
2	16	8	1.80	-	14	-
3	16	40	2.00	80	-	-
4	16	40	1.65	66	-	-
5	16	12	1.15	19.8	14.4	88
Lungimi pe diametre (m)			15.9	0.395	0.617	1.208
Greutate pe 1m (kg)			65	10	110	-
Greutate pe diametre (kg)			65	10	110	-
Total (kg)			-	-	-	5500-185



Inainte de montajul carcasetor de buloane se vor verifica cotele de nivel.

EXTRAS LAMINATE carcase de buloane stalpi metalici							
Pozitie	Descriere	Dimensiune mm	Lungime mm	Buc.sti	Gr. pe m kg/m	Gr. pe buc kg/buc	Gr. pe total kg/tot
P1	tabla groasa	5 x 400	400	1	15.70	6.28	6.28
P2	buloane ancoraj	16	900	6	-	-	-
<b>Greutate</b>							<b>6.28 kg</b>
<b>Grund+electrozi 2%</b>							<b>0.13 kg</b>
<b>Greutate totală</b>							<b>25.62 kg</b>

LISTA LAMINATE SCARA METALICA INTERIOARA								
Profile	Material	NUM	Length [mm]	Length sur	Weight[kg]	Weight sur	Area [m2]	Area sur
CFCHS152.4X6	S235JR	2	1155	2310	24.7	49.5	0.55	1.11
CFCHS152.4X6	S235JR	2	2891	5782	61.9	123.8	1.38	2.77
Sub total, CFCHS152.4X6					8092	173.3	3.88	
HEA160	S235JR	2	176	352	5.4	10.7	0.16	0.32
HEA160	S235JR	2	272	544	8.3	16.6	0.25	0.49
HEA160	S235JR	2	438	876	13.3	26.7	0.4	0.79
HEA160	S235JR	4	830	3320	25.3	101	0.75	3.01
HEA160	S235JR	2	1241	2482	37.8	75.5	1.12	2.25
HEA160	S235JR	2	1296	2593	39.5	78.9	1.17	2.35
HEA160	S235JR	2	2500	5000	76.1	152.2	2.26	4.53
HEA160	S235JR	2	3507	7014	106.7	213.5	3.18	6.35
Sub total, HEA160					22179	675	20.09	
L80*5	S235JR	32	338	10816	1.8	57.3	0.1	3.07
L80*5	S235JR	2	1538	3076	9.1	18.2	0.48	0.96
L80*5	S235JR	2	1642	3284	9.7	19.4	0.51	1.03
L80*5	S235JR	34	2030	69020	12.1	410.9	0.64	21.67
L80*5	S235JR	2	2280	4560	13.6	27.2	0.72	1.43
Sub total, L80*5					90756	533	28.17	
PL5*70	S235JR	8	72	578	0.2	1.6	0.01	0.09
PL5*70	S235JR	40	134	5360	0.4	14.4	0.02	0.81
Sub total, PL5*70					5938	15.9	0.9	
PL5*100	S235JR	24	100	2400	0.3	6.3	0.02	0.36
Sub total, PL5*100					2400	6.3	0.36	
PL10*37	S235JR	4	300	1200	0.8	3.2	0.03	0.11
Sub total, PL10*37					1200	3.2	0.11	
PL10*150	S235JR	16	142	2272	1.7	26.8	0.05	0.78
Sub total, PL10*150					2272	26.8	0.78	
PL10*160	S235JR	4	300	1200	3.8	15.1	0.11	0.42
Sub total, PL10*160					1200	15.1	0.42	
PL10*174	S235JR	64	300	19200	2.1	131.1	0.06	3.86
Sub total, PL10*174					19200	131.1	3.86	
PL10*176	S235JR	4	300	1200	2	8.2	0.06	0.24
Sub total, PL10*176					1200	8.2	0.24	
PL12*150	S235JR	2	142	284	2	4	0.05	0.1
Sub total, PL12*150					284	4	0.1	
PL12*400	S235JR	4	400	1600	11.6	46.6	0.26	1.05
Sub total, PL12*400					1600	46.6	1.05	
PL15*340	S235JR	2	500	1000	20	40	0.37	0.73
Sub total, PL15*340					1000	40	0.73	
PL20*440	GROUT	4	440	1760	0	0	0.31	1.25
Sub total, PL20*440					1760	0	1.25	
<b>Total:</b>						<b>1678.4</b>	<b>61.94</b>	



MATERIALE:  
 - beton armat : C35/45  
 - beton simplu: C16/20  
 - beton egalizare: C12/15  
 - Armatura: BST500-C  
 - Otel laminat: S235JR

NOTA:  
 - Se va verifica pe santier. Se va anunta proiectantul in cazul unor diferente de cote intre proiect si situatia de pe santier.  
 - Se va acordat o atentie deosebita la realizarea fundatiilor pentru a se evita erorile de montaj.  
 - In betonul utilizat pentru realizarea infrastructurii se va adauga aditiv special de impermeabilizare.  
 - Solutia de fundare va fi confirmata de catre elaboratorul studiului geotehnic.  
 - Terenul de fundare va fi confirmat de catre un inginer geotehnic.

Lista organe asamblare scara interioara				
Diametru	Lungime	Tip	Grupa	Numar
M20	60	Surub	8.8	4
M16	60	Surub	8.8	84
M16	conform furnizor	Ancore chimice Hilti HIT-V+Mortar Hilti HIT-HY 200	8.8	16

REVISIUNAR  
 REV2 DATA3 M3  
 REV2 DATA2 M2  
 REV01 DATA1 M1  
 REV DATA MOTIVUL

PROIECTANT / DESIGNER: Ing. Burcu Stefan  
 VERIFICATOR / CHECKER: Ing. Burcu Stefan  
 SCALA / SCALE: 150/120  
 DATA / DATE: 03.2025  
 FAZA / PHASE: P.T.  
 PLAN NR.: Rsm.01\*